

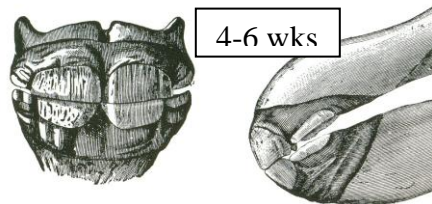
*The ability to age horses is a important when buying and selling animals. The systems are simple, and there is some room for interpretation, but the guidelines listed here can be used with a little practice.*

Some breeds give us a precise way of determining age and parentage by lip **tattoos** or **freeze brands**. The first letter in the ID represents a given year of birth, from which the age can be calculated for Thoroughbreds (TB) and Standardbreds (SB).

Year	TB	SB
1982	L	<b>A</b>
1983	M	<b>B</b>
1984	N	<b>C</b>
1985	O	<b>D</b>
1986	P	<b>E</b>
1987	Q	<b>F</b>
1988	R	<b>G</b>
1989	S	<b>H</b>
1990	T	<b>I</b>
1991	U	<b>J</b>
1992	V	<b>K</b>
1993	W	<b>L</b>
1994	X	<b>M</b>
1995	Y	<b>N</b>
1996	Z	<b>O</b>
1997	<b>A</b>	<b>P</b>
1998	<b>B</b>	<b>Q</b>
1999	<b>C</b>	<b>R</b>
2000	<b>D</b>	<b>S</b>
2001	<b>E</b>	<b>T</b>
2002	<b>F</b>	<b>U</b>
2003	<b>G</b>	<b>V</b>
2004	<b>H</b>	<b>W</b>
2005	<b>I</b>	<b>X</b>
2006	<b>J</b>	<b>Y</b>
2007	<b>K</b>	<b>Z</b>

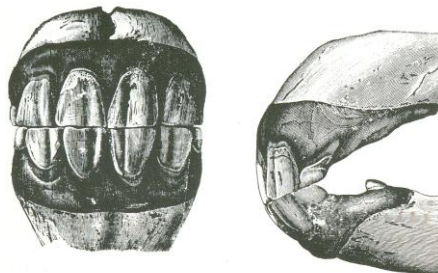
**Baby Tooth Eruption** (when they break through the gums) is helpful when determining the age of young foals. Horses have three pairs of incisors in both the upper and lower jaw. The central pair is I1, the middle pair is I2, and the edge pair is I3. A “d” notation refers to the fact that they are baby (deciduous) teeth.

Tooth	Eruption Age
dI1	0-7 days
dI2	4-6 weeks
dI3	6-9 weeks



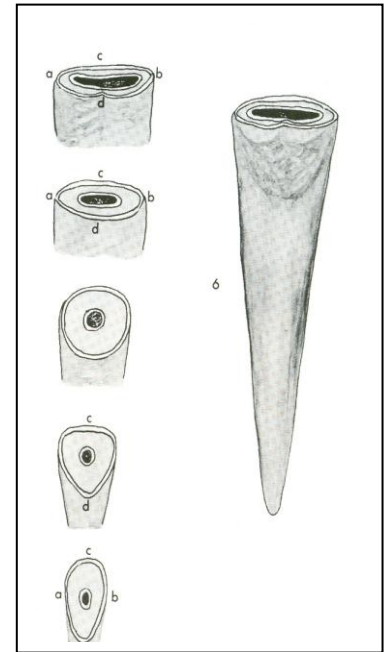
**Permanent Tooth Eruption** is followed 6 months later by the tooth growing far enough out of the jaw to touch the opposing tooth (called being “in wear”). These teeth are larger,

Tooth	Age (yrs)
I1 erupts	2.5
I1 in wear	3.0
I2 erupts	3.5
I2 in wear	4.0
I3 erupts	4.5
I3 in wear	5.0



4.0 years

Teeth continue to erupt and wear down as the horse ages. Over the years the tooth changes from a flat oval to a round tooth, then to a triangle, then to a tall oval. At the same time the structures within the tooth wear away, changing the appearance of the wear surface of the tooth.



Horse between the ages of **5-8 years** can be aged by the presence of “cups” in the flat oval surface of the lower permanent incisors.

5 years	Cups in all lower incisors
6 years	Cup gone in lower I1
7 years	Cup gone in lower I2
8 years	Cup gone in lower I3

Horses through their **teen years** can have their age **estimated** by the shape of the chewing surface of the lower teeth, the shape of the corner incisor (I3), and Galvayne’s Groove.

9-10 yr	I3 looks square from the side. The teeth are still steeply vertical in orientation. Lower I1 is becoming triangular. Galvayne’s Groove appears at the Gum line.
11-15 yrs	I3 looks taller than wide from the side. The teeth are beginning to have a less steep orientation. Lower I1 and I2 are becoming triangular. Galvayne’s Groove is halfway down the tooth.
16-20 yrs	I3 is very tall and flat from the side. The lower incisors move from triangular to a tall oval. Galvayne’s Groove extends to the chewing surface of the tooth.
older	All incisors are very flat in the mouth. The chewing surfaces are very tall ovals. Missing molars are common.